

The European Union's Tacis programme
for Ukraine

CAPACITY BUILDING IN DONETSK OBLAST FOR WASTE MANAGEMENT - UKRAINE

Report

Solid Household Waste Management

Enterprises' Reporting



This project is funded by the
European Union

A project implemented by



Sogreah



GKW Consult



ADEME

Documents management

Title	Solid Household Waste Management Enterprises' Reporting		
Code	070124 Reporting of SHW Companies_E.doc	Date Redaction	10/07/06
Index of Revision		Emitter	Philippe FICHAUX Natalia BILOVA

Warning

This programme is implemented by the Consortium Sogreah – GWK Consult - ADEME. The views expressed in this report do not necessarily reflect the views of the European Commission.

Table of contents

1. Introduction	4
2. Methodology	5
2.1. Database	5
2.1.1. Regulatory base	5
2.1.2. Information base	5
2.1.2.1. Enterprises' database	5
2.1.2.2. Database of the Central Department of City-Planning, Architecture, Housing and Public Utility Services of the Regional State Administration	6
2.1.2.3. Database of the Central Department of Statistics of Donetsk Region	6
2.2. Implementation schedule	6
2.2.1. Subjects of research	6
2.2.2. Data collection	7
2.2.3. Preparation of the reporting materials	7
3. Solid Household Waste Management reporting	8
3.1. General characteristic of the reporting	8
3.2. National reporting forms	12
3.2.1. Form N°14-mtp "Report on Production, Use and Supply of Recyclables and Industrial Waste"	12
3.2.1.1. Characteristics	12
3.2.1.2. Analysis of reporting form #14 mtp submitted by the transport companies dealing with the SHW collection	13
3.2.1.3. Annual Form N°14-mtp Analysis (totally for Region)	14
3.2.2. Form N° 1- arrears (Housing and Public Services) «Report on payment recovery from population for housing, public services and electricity»	15
3.2.3. Form "Tax calculation of charge for environment pollution"	16
3.3. Analysis of branch reporting forms	16
3.3.1. Reporting form #1-SHW "Report on Solid Household Waste Management" Features of the table forms	17
3.3.2. Form N°1C – Housing utility "Report on operational costs and financial indicators of the enterprises dealing with maintenance of houses, constructions and near-housing territories"	17
3.4. Analysis of institutional reporting forms in the field of SHW management	18
3.4.1. Characteristics and analysis of the summarised form "Sanitary Cleaning of the Donetsk Oblast Populated Areas for 2004-2005"	18
3.4.2. Analysis of the summarised form "Sanitary Cleaning in Donetsk Oblast in 2005"	21
4. Comments	22
5. Recommendations	23

Annexes

Annex 1. Forms of statistical reporting N°14-mtp «Report on production, use and supply of the secondary raw materials and industrial waste»	25
Annex 2. Form N°1 - arrears (Housing and public services) «Report on payment for housing and public services and electricity by population»	35
Annex 3. Form «Tax calculation of charge for environmental pollution»	38
Annex 4. Tables of statistical reporting form N°1 - SHW «Report on SHW management»	42
Annex 5. Form N°1 C - Housing utility "Report on operational costs and financial indicators of the enterprises dealing with maintenance of houses, constructions and near-housing territories"	50

1. Introduction

The main objective of the study was reporting in the sphere of the solid household waste management enterprises.

Today in Ukraine there are almost no national forms of primary reporting, uniform form of national statistical reporting describing the status of the sphere of solid household waste, including the volumes of generation, utilisation and disposal of SHW. The existing form of statistical reporting # 14-mtp is not perfect for account of such group of waste as solid household waste. Moreover, it is practically not filled in by companies collecting SHW, and thus does not depict the actual situation in this sphere.

In aim to fulfil the Programme of Solid Household Waste Management ratified by the Decision of the Cabinet of Ministers of Ukraine as of 4 March 2004 and in order to monitor the state of solid household waste and introduce the relevant reporting in accordance with the Order of the Ministry of Construction, Architecture, Housing and Public Services of Ukraine as of 19.09.2006 #308 and upon the agreement of the National Committee of Statistics there was ratified and introduced into practice from the 1st of January 2007 the form of reporting №1-SHW «Report on solid household waste management» which will be analysed in this report. It should be noted that this form is not considered as a state statistic report.

Nowadays the companies and organizations working in the field of SHW management develop the following reports which are considered in the present study:

- national statistic reports provided to statistic bodies;
- national reports to various institutions (tax administration, Pension Fund, the Treasury, etc.);
- branch reports provided to the Central Department of City-planning, Architecture, Housing and Public Utility Services of the Regional State Administration and local departments of housing and public utility services in accordance with the report forms approved by the Ministry of Construction, Architecture, Housing and Public Utility Services of Ukraine);
- institutional reports provided to the Central Department of City-planning, Architecture, Housing and Public Utility Services of the Regional State Administration and local departments of housing and public utility services.

Based on the conducted analysis of all the data there were identified the problems and offered recommendations regarding improvement of reporting and generation of data in the sphere of solid household waste management.

The report “Analysis of reports prepared by companies working in the field of solid household waste” was prepared on the 31st of July 2006. Afterwards there were inserted the changes considering that there was introduced a new form of reporting #1-SHW “Report on Solid Household Waste Management” reflecting the state as of 22.01.2007.

2. Methodology

2.1. Database

2.1.1. Regulatory base

For the study of the enterprises' reporting and database analysis in the sphere of the SHWM in Donetsk Region as well as further recommendations on improvement of SHW collection the following documents were used:

- Law of Ukraine on Waste;
- Law of Ukraine on Environmental Protection;
- Law of Ukraine on the Sanitary and Epidemiological Well-being;
- Law of Ukraine on the National Statistics
- Law of Ukraine on Improvements of Populated Areas
- Law of Ukraine on Housing and Public Utility Services.

2.1.2. Information base

The analysis is conducted on the basis of the current national forms of reporting, including statistical, branch and institutional reports of enterprises in the sphere of SHW management.

In addition, annual 2005 data on production and supply of solid household waste globally in the region, prepared by the Central Department of Statistics of Donetsk Region, and internal institutional reporting of the Central Department of City-planning, Architecture, Housing and Public Utility Services in the sphere of SHWM were analysed in accordance with form #14 MTP for the oblast in general.

2.1.2.1. Enterprises' database

The present report considers all types of reports provided by public utilities engaged in waste collection, including the forms of national statistics, national reports provided to various institutions approved in accordance with the current laws of Ukraine, internal reports provided to structural sub-divisions of local self-government bodies involved in housing and public utility sector as well as institutional reporting¹ submitted to the Central Department of City-planning, Architecture, Housing and Public Utility Services of the Regional State Administration.

The main part of reports is submitted to the local departments of statistics and tax administration.

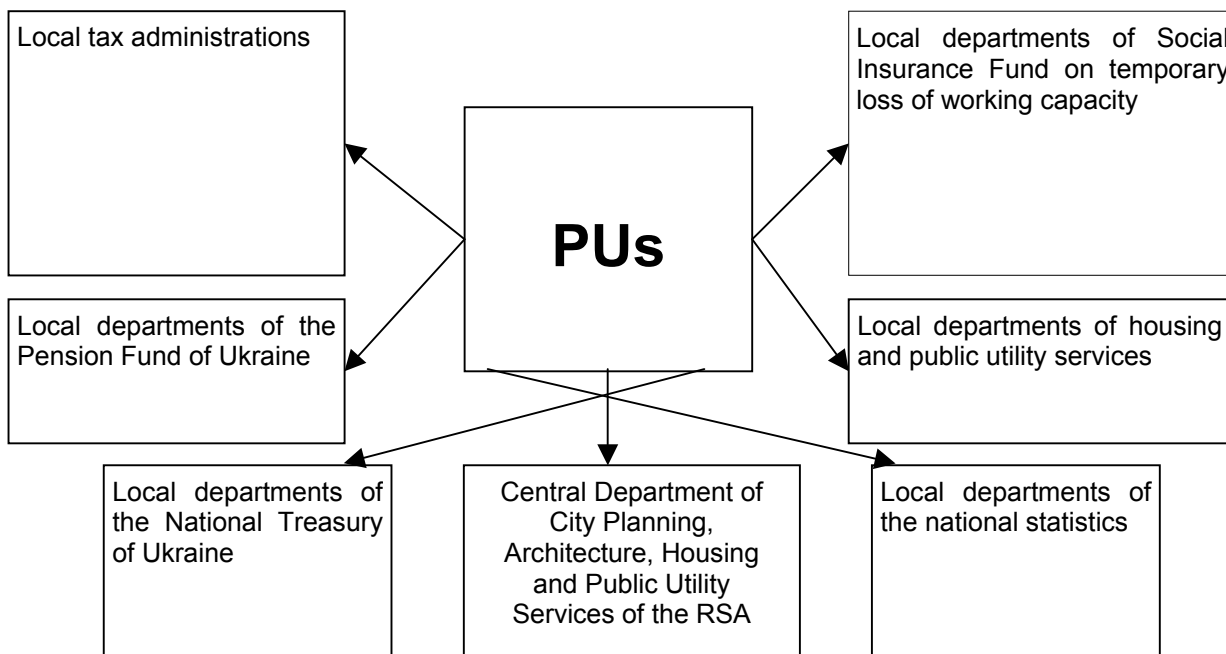
Out of the total number of submitted forms (26 forms) only 5 refer directly to public utility activities in the field of SHW collection. These are the following types of report:

1. Form N°1 – SHW “Report on solid household waste management” – branch reports;
2. Form N°1C - Housing Services “Report on production costs and financial indicators of company performance on provision of maintenance services for buildings, structures and areas adjacent to buildings” – branch reports;
3. Form N°14-mtp “Report on production, utilisation and supply of recyclables and industrial waste” – national statistical report.
4. Form N°1C - arrears (Housing and Public Services) “Report on payment recovery from population for housing and public utility services and electricity” – national statistical reporting.
5. “Sanitary cleaning of populated areas of Donetsk oblast” – institutional reports. Before the 1st of January 2007 the companies used to develop 2 such forms. One of them (a quarter form and an annual form is for the use inside the oblast. The other one with an additional list of indicators used to be provided

¹ Internal institutional reports are the reports of enterprises and organizations submitted to higher bodies on their request which determine the format and the deadlines for submission of the reports. For SHW collection public utilities the higher bodies are local departments of housing and public utility services, the Central Department of City Planning, Architecture, Housing and Public Utility Services of the Regional State Administration.

to the Ministry of Construction, Architecture, Housing and Public Utility Services of Ukraine. As soon as a branch report based on the form N°1 – SHW “Report on Solid Household Waste Management” was introduced this form is no longer developed for the Ministry of Construction.

The other 21 types of reports are compulsory and should be submitted by all business entities regardless the ownership form and type of production activity. You will find below a scheme of reports to be submitted to the relevant institutions.



2.1.2.2. Database of the Central Department of City-Planning, Architecture, Housing and Public Utility Services of the Regional State Administration

Based on the data submitted by enterprises the Central Department of City Planning, Architecture, Housing and Public Services at the regional level compiles the following aggregate forms of reporting in the sphere of SHW management.

1. Reports submitted to the Ministry of Construction, Architecture, Housing and Public Services of Ukraine according to:

- Form N°1 – SHW “Report on solid household waste management” – an annual form;
- Form N°1C - Housing Services “Report on the production costs and financial indicators of enterprises activity providing housing, constructions and near-house territories maintenance services” – a quarterly form.

2.1.2.3. Database of the Central Department of Statistics of Donetsk Region

Based on the data of enterprises of the region reporting according to form N°14-mtp the Central Department of Statistics of Donetsk Region produces the summarized form of report for the region N°14-mtp “Report on production, use and supply of recyclables and industrial waste”, including the group of solid household waste classified as 034, which is analysed in this report.

2.2. Implementation schedule

2.2.1. Subjects of research

Transport companies’ activity reporting for 2005 was used as a database for the study. It was analysed in the first quarter of the year 2006.

These are such enterprises as transport company N° 052810 (Kramatorsk city), public utility “Artemovskkommunspetstrans” (Artemovsk city), transport company N° 052805 (Druzhkovka city), public utility «OZHKKH YAGS» (Yasinovata city), public utility «Kommuntrans» (Makeyevka city).

The institutions that have information about reporting and database in the sphere of the solid household waste management in the region are the Central Department of Statistics in Donetsk Region and the Central Department of City-planning, Architecture, Housing and Public Services of the Regional State Administration, the State Department of Environment Protection in Donetsk Oblast. The forms mentioned above were agreed upon with them.

2.2.2. Data collection

Data collection (report forms) was done when visiting public utility “OZHKKH YAGS” (Yasinovata city), the Central Department of Statistics in Donetsk Region, the State Department of Environment Protection in Donetsk Oblast. Part of the information was received by fax and telephone from the Central Department of City-planning, Architecture, Housing and Public Services of the Regional State Administration and enterprises, local statistical administrations and the departments of the executive committees, enterprises.

2.2.3. Preparation of the reporting materials

The received reporting forms were analysed and the database in the sphere of the SHW management in region was characterized. The recommendations to improve the activity in the field were proposed on the basis of report forms.

3. Solid Household Waste Management reporting

3.1. General characteristic of the reporting

Legal regulation of the SHW management and the statistical reporting is ensured by the Law of Ukraine on Waste, the Law of Ukraine on Environmental Protection, the Law of Ukraine on the Sanitary and Epidemiological Well-being, the Law of Ukraine on the National Statistics, the Law of Ukraine on Improvement of Populated Areas and the Law of Ukraine on Housing and Public Services.

Based on the information received from enterprises engaged in SHW collection in 5 cities of the oblast: KATP N 052810 (city of Kramatorsk), PU "Artemovskcommunspetstrans" (city of Artemovsk), KATP N 052805 (city of Drujkovka), PU "Kommuntrans" of the city of Makeevka, PU "OJKKH YAGS" (city of Yasinovataya) we have analysed their reports for 2005 provided to different institutions.

It has been found out that the reports are submitted to local departments of statistics and tax office, Pension Fund of Ukraine, National Treasury of Ukraine, Social Insurance Fund on Temporary Loss of Working Capacities, the Central Department of City-planning, Architecture, Housing and Public Utility Services of the Regional State Administration, local departments of housing and public utility services.

Thus, analysis of data in the forms provided by PU «OZHKH YAGS» (Yasinovataya city) has shown that throughout the year 2005 the company has prepared 26 types of reports (among which: 23 national reports, 1 branch report and 2 institutional reports) which were submitted to 7 organizations. Eight forms were submitted to local tax administration, eleven forms - to local departments of statistics, two forms – to local department of Pension Fund, one – to local body of the National Treasury, one form – to local body of National Social Insurance Fund of Ukraine for Temporary Loss of Working Capacities, one – to the Central Department of City-planning, Architecture, Housing and Public Services, two – to the department of housing and public utility services of the city executive committee of the Yasinovata city council. It should be noted that from the 1st of January 2007 the public utility should submit to the latter one more reporting form – a branch form N°1 – SHW "Report on Solid Household Waste". Since that time the annual institutional form on sanitary cleaning of populated areas of the oblast has stopped to be developed.

As was mentioned earlier, out of the total number of report forms only five characterise the activities of enterprises in the sphere of SHW management. The rest of the forms reflect the results of their production and financial activity and are filled in by all enterprises regardless ownership form and type of economic activity. These are such reporting forms as "Report on the main figures of company's activity", form #1 – services "Report on the volumes of provided services", "Balance", "Report on financial results" and other.

Taking into account the established frequency of reporting submission it follows that 5 reports are submitted once per year, two reports are provided twice per year, 12 reports are provided four times a year, 7 report are submitted once a month.

The list of the above-mentioned reporting forms produced by companies (the state of 01.01.2007) is given in the table below:

#	Name of document	Date and no. of order on approval of reporting forms	Frequency of reporting submission
Place of documents' submission is local state tax administration department in the locality of the company			
1.	Balance (annex to Provisions (accounting standard 2)	Order of the Ministry of Finances of Ukraine of 31.03.99.# 87	Quarterly progressive total and annual
2.	Report on financial results (addendum to Provisions (accounting standard 3)	Order of the Ministry of Finances of Ukraine of 31.03.99 # 87	Quarterly progressive total and annual

#	Name of document	Date and no. of order on approval of reporting forms	Frequency of reporting submission
3.	Calculation of tax for owners of vehicles and other machines and devices	Order of the State Tax Administration of Ukraine of 17.09.2001 # 373	Annual
4.	Calculation of charge for environmental pollution	Order of the State Tax Administration of Ukraine of 17.03.2005 № 111 (under the editorship of the order of the state tax administration of Ukraine of 20.12.2005 # 587)	Quarterly progressive total and annual
5.	Declaration on the VAT	Order of the State Tax Administration of Ukraine of 30.05.1997 # 166 (under the editorship of the order of the state tax administration of Ukraine of 15.06.2005 # 213)	Quarterly progressive total and annual
6.	Declaration on the profits tax of companies	Order of the State Tax Administration of Ukraine of 29.03.2003 # 143	Quarterly progressive total and annual
7.	Calculation of payments for special-purpose use of water resources and use of water for needs of hydro-energy generation Addendum # 2 to Instruction on the order of calculation and payment of charge for special-purpose use of water resources for the needs of hydro-power and water transport		Quarterly progressive total and annual
8.	Calculation of communal tax	Order of the State Tax Administration of Ukraine of 24.12.2003 # 625	Monthly, quarterly progressive total and annual
Place of documents' submission is the local department of statistics in the locality of the company			
9.	Form # 14-mtp "Report on production, use and supply of secondary raw materials and industrial waste	Order of the State Committee of Statistics of Ukraine of 14.10.2004 # 560	Half a year (1 half a year, the whole year)
10.	Study of consumption of goods and services in production of goods (works, services) over 2005	Order of the State Committee of Statistics of Ukraine of 15.10.2003 # 346	Annual – single time for 2005
11.	Form #3-mtp "Report on remains and inputs of materials	Order of the State Committee of Statistics of Ukraine of 15.09.2005 # 271	Twice a year (for the first half and for the year)
12.	Report on the main indicators of company's activity	Order of the State Committee of Statistics of Ukraine of 04.11.2005 # 352	Annual
13.	Form #3-PV "Report on the use of the working time (according to the list of reporting)	Order of the State Committee of Statistics of Ukraine of 21.07.2003 # 224	Quarterly progressive total and annual
14.	Report on labour (according to the list of reporting)	Order of the State Committee of Statistics of Ukraine of 11.08.2004 # 472	Monthly

#	Name of document	Date and no. of order on approval of reporting forms	Frequency of reporting submission
15.	Form #1-services "Report on the volumes of provided services"	Order of the State Committee of Statistics of Ukraine of 18.07. 2003 # 221	Monthly
16.	Form #1-B "Report on financial results and accounts receivable and accounts payable"	Order of the State Committee of Statistics of Ukraine of 02.11.2005 # 344	Annual and monthly (1 section); annual, quarterly (II section)
17.	Form #1-arrears (Housing and Public Services) "Report on payment of housing, public services and electricity by population"	Order of the State Committee of Statistics of Ukraine of 15.10.2003 # 346	Monthly
18.	Report on the amount of tax benefits for legal persons and natural persons who are the entrepreneurs	Order of the State Tax Administration of Ukraine and the State Committee of Statistics of Ukraine of 23.07.2004 # 419/453	Quarterly progressive total and annual
19.	Annex 1 to form #11-MTP "Actual consumption of fuel for production of certain types of goods and service for 2005"	Order of the State Committee of Statistics of Ukraine of 15. 09.2005 # 271	Annual
Place of documents' submission is the body of the State Treasury of Ukraine in the locality of the company			
20.	Annex #6 to the Provisions for production of monthly and quarterly financial reporting in 2006 by institutions and organizations that receive funding from the national or local budgets. Report on receipt and use of other funding from special-purpose fund (form #4-3d, #4-3m)	Order of the State Treasury of Ukraine of 30.03.2005 #114	Monthly, quarterly
Place of documents' submission is the body of the Fund of Social Insurance in case of temporary loss of working capacity in the locality of the company's registration			
21.	Report on the calculated fees, payments and costs linked to compulsory national social insurance in case of temporary loss of working capacity	Resolution of the administration of the Social Insurance Fund for cases of temporary loss of working capacity of 04.03.2004 # 21	Quarterly progressive total and annual

#	Name of document	Date and no. of order on approval of reporting forms	Frequency of reporting submission
Place of documents' submission is the body of the Pension Fund of Ukraine in the locality of the company's registration			
22.	Addendum 23 to point II.II. of the Instruction on the order of calculation and payment of fees by insurers and insureds for compulsory public pension insurance to the Pension Fund of Ukraine. Calculation of insurance fees for compulsory pension insurance to be paid for ----- month of 2005	Resolution of the administration of the Pension Fund of Ukraine of 31.01.2005 #3-1	Monthly
23.	Addendum 6 to point 6.7. of the above instruction. Pay-sheet on calculation of insurance fees to the Fund of Public Social Insurance of Unemployed of Ukraine	Resolution of the administration of the Pension Fund of Ukraine of 31.01.2005 #3-1	Quarterly progressive total and annual
Place of documents' submission is the Central Department of City-planning, Architecture, Housing and Public Services of the Regional State Administration			
24.	Form #1C-housing sector* «Report on production costs and financial figures of company's activity resulting from provision of services for maintenance of housing, constructions and adjacent territories»	Order of the State Committee of Housing and Public Services of Ukraine of 16.12.2004 # 224 agreed with the State Committee of Statistics of Ukraine	Quarterly
Place of document's submission is local departments of housing and public services			
25.	Form #1 – SHW “Report on solid household waste treatment”	Order of the Ministry of Construction of Ukraine as of 19.09.2006 #308 agreed with the State Committee of Statistics of Ukraine	Annual
26.	Form «Sanitary cleaning of populated areas of Donetsk Region» (for internal regional use according to the form of the Central Department of Architecture, Housing and Public Services)		Quarterly progressive total and annual

Beside the reports submitted by companies, the present report considers also internal institutional reports developed by the Central Directorate of City-planning, Architecture, Housing and Public Utility Services of the Regional State Administration such as reports on sanitary cleaning of populated areas of the oblast

* Filled in by companies, organizations and institutions or any ownership form, ZHEKs, housing and construction cooperative societies that keep on balance sheets and operate the housing stock, and organizations providing public services to the population.

for 2004-2005 (internal regional use) and reports on sanitary cleaning of Donetsk oblast for 2005 provided to the Ministry of Construction, Architecture, Housing and Public Utility Services of Ukraine.

3.2. National reporting forms

3.2.1. Form N°14-mtp “Report on Production, Use and Supply of Recyclables and Industrial Waste”

3.2.1.1. Characteristics

The form was approved by the Resolution of the National Committee of Statistics N°560 of 14.10.2004 and is confidential.

It is submitted by legal entities, enterprises and organizations regardless the type of economic activity, ownership and management forms; those that produce, use and supply the secondary raw materials.

The form should be submitted on semi-annual and annual basis.

It should be noted that the reporting form in question exists for more than decade. Thus before 90-s (before CIS existence) it was called form 14-sn. Later while establishing the national reporting in Ukraine it was taken as the basis for reporting on secondary resources with its named changed to form 14 mtp.

At the moment the form is used for reporting on 60 types of recyclable materials and industrial waste under various codes.

The form was re-approved with slight changes and since 2002 the companies should include SHW encoded 034 into it.

At the same time the form was developed for account of movement of industrial waste which owners are companies generating, accumulating and storing this type of waste. These companies execute all further operations on waste movement reflected in form #14 mtp, particularly the use of this waste and its sale.

Due to peculiarity of the solid household waste sector when this type of waste cannot be accumulated at the places of its generation, stored and sold and is subject to disposal on to the landfill, the form in question is not appropriate for account of this type of waste.

There are various forms of relationship between the owners of SHW and companies making waste collection. The key owner of solid household waste is the population which delegates its obligations on waste removal to housing organizations. The latter in their turn make contracts for SHW collection and transportation to the landfills mainly with companies providing this kind of service. Sometimes the housing maintenance organizations fulfil waste collection themselves. The owners of landfills in these circumstances can be both transport public utilities and other legal persons. At the same time, according to Instructions for filling the reporting form, the owners of landfills do not submit this kind of reporting.

Smaller volume of waste (compared to the share produced by population) is produced by companies, institutions and organizations which conclude contracts with transport companies for its collection or collect and transport this waste themselves.

Analysis of statistical reporting in the form #14 mtp shows that it covers the following aspects characterizing the annual balance of waste:

- **their availability by the beginning of the reporting period;**
- **production over the reporting period from the beginning of the year;**
- **total externally received waste, including the waste from:**
 - **other enterprises and organizations;**
 - **individuals – business entities;**
 - **as import;**
- **total use of waste, including the use for:**
 - **manufacturing production;**
 - **production of consumer goods;**
 - **fuel;**
- **waste supplied (sold) to:**

- other enterprises and organizations;
 - individuals – business entities;
 - as export;
- waste disposal;
 - waste availability by the end of the reporting period.

In this form the solid household waste data are classified under 034 coding.

3.2.1.2. Analysis of reporting form #14 mtp submitted by the transport companies dealing with the SHW collection

Instructions for filling of the form approved by the resolution of the State Committee of Statistics of Ukraine of 27.10.2005 # 331 is the uniform one for description of companies' activity with any types of wastes. It does not take into account the peculiarity of the solid household waste sector. Thus, there is no clear explanation as to the procedure for entering data on solid household waste following the items below:

Column 1 "Waste availability by the beginning of the reporting period";

Column 2 "Produced over the reporting period from the beginning of the year";

Column 15 "Waste disposal";

Column 16 "Waste availability by the end of the reporting period".

This leads to discrepancy in approaching the form by companies working under equal conditions.

The table below shows the data of the form N°14-mtp for 2005 submitted by the motor transport public utilities of the communal ownership.

Extract from the form N°14-mtp of statistical reporting classified under 034 «Solid Household Waste» coding

(in tonnes)

Types of waste	Waste availability by the beginning of the reporting period	Produced over the reporting period from the beginning of the year	External waste		Waste disposal	Waste availability by the end of the claim period
			Total	From other enterprises and organizations		
	1	2	3	4	15	16
Public utility "Artemovskkommunspetstrans" Artemovsk city		-	24 242	24 242	24 242	-
Transport company N° 052810 Kramatorsk city		-	66 939	66 939	66 939	-
Transport company N° 052805 Druzhkovka city	1 462 682	-	22 775	22 775	-	1 485 457
Public utility «OZHKH YAGS» Yasinovataya city	-	63	12 711	3 045	12 774	-

According to the data of the public utility "Artemovskkommunspetstrans" (Artemovsk city) the solid household waste transportation was characterized in the following way:

Column 1 "Waste availability by the beginning of the reporting period" – zero;

Column 2 “Produced over the reporting period from the beginning of the year” – zero;

Column 3 “Total external amount of waste” – 24 242 tonnes (from all groups of service consumers);

Column 15 “Waste disposal” – 24 242 tonnes;

Column 16 “Waste availability by the end of the reporting period” – zero.

Similar approach to filling the form is used by transport company N° 052810 (Kramatorsk city) and public utility “OZHKKH YAGS” (Yasinovata city). Moreover, the public utility “OZHKKH YAGS” in column 2 shows the waste production of 63 tonnes that is not mentioned by other enterprises. This is linked to the peculiarity of the company’s activity on which area there are production facilities (premises) with a number of employees which leads to considerable production of solid household waste. Other companies disregard smaller volume of waste generated on their territory (5 to 7 tons a year) and do not show it in their reporting which is incorrect as by doing so they distort the reporting data.

As against mentioned enterprises, only transport company N° 052805 (Druzhkovka city) in column 1 shows the amount of the received SHW, accumulated on the landfill (1 462 682 tonnes); SHW amount in column 3 “Total external amount of waste” – 22 775 tonnes (from all groups of service consumers). The company in column 16 “Waste availability by the end of the reporting period” indicates the annual amount of the received waste and the SHW amount on the landfill registered by the beginning of the reporting period (1 485 457 tonnes totally).

At the same time the mentioned enterprise does not provide information about the amount of the SHW classified in column 15 “Waste disposal”.

3.2.1.3. Annual Form N°14-mtp Analysis (totally for Region)

Based on the reporting forms received from companies the Central Department of Statistics in Donetsk Region produces the summarized regional form #14 mtp for 2005, including the waste encoded as 034 that is the group of solid household waste which accommodates the database on the movement of waste globally for a city or a district (Annex 1).

The forms from companies are submitted to the Central Department of Statistics of Donetsk Region through the local departments of statistics which do not process them, but just transmit them. Also, the aggregate data summarized by the Central Department of Statistics of Ukraine can be provided to local bodies of statistics only if specially requested. Thus, the database on movement of SHW in cities and districts is not produced and not traced.

Having conducted the analysis of the aggregate data, including that for cities and districts for 2005, the following was identified.

1. Imperfection of reporting on the solid household waste movements.

In spite of the fact the form was modified a number of times it does not suit the category of “Solid Household Waste” due to the peculiarity of this waste type. It characterizes production, use and delivery of the secondary raw materials from industrial waste that can be accumulated, stored, sold, recycled and disposed on to landfills. It does not refer to the solid household waste.

2. The data from the considered form do not depict the actual situation with the volumes of production, removal and availability of solid household waste totally for the region. Thus, according to the reported data for 2005:

- in column 2 “Production over the reporting period from the beginning of the year” – 172.4 thousand tons of waste;
- in column 15 “Waste disposal” – 575.2 thousand tons (3.3 times more than produced waste);

At the same time, according to the internal institutional reporting on sanitary cleaning for 2005 produced by the Central Department of City-planning, Architecture, Housing and Public Services and submitted to the Ministry of Construction, Architecture, Housing and Public Services of Ukraine, the volumes of annual SHW accumulation and transportation to the landfills in the region are 7 and 2.1 time higher correspondingly.

According to the form, the total volume of SHW accumulated in the region by the first of January 2006 (column 15 plus column 16) makes 2.4 million tons or about 10 million m³, while according to the State Department of Ecology and Natural resources in Donetsk Region, their volume makes about 400 million m³.

3. The data above demonstrate that not all companies (be they waste collection companies or industrial companies) submit reporting by form #14 mtp. Some of them enter the data about volume of transported waste not into column 15 "Waste removed, disposed", but into column 16 "Waste availability by the end of the reporting period", and thus underestimate the actual volume of SHW. All in all 389 companies of the region submit this reporting, while the total number of industrial companies makes 800.

For example, public utility "Kommunalnik" in Marioupol and Makeevka, local department of UkrEkologia in Khartsyzsk with annual volumes of SHW collection 157.6 thousand tons, 130 thousand tons and 16.6 thousand tons respectively do not fill in the reporting form 14 mtp.

Only a small number of industrial companies that produce solid household waste and have transport companies collecting it report according to this form.

Thus, transport company N°052805 (Druzhkovka city) concluded 286 contracts for SHW collection with companies and organizations with total amount of SHW collection 22.6 thousand tonnes. Moreover, except transport company N°052805 two more enterprises submit the reporting data according to form N°14-mtp.

Thus, such companies as "Gas Facility Plant in Druzhkovka" and "Hardware Plant in Druzhkovka" that concluded these contracts with SHW amounts 103.4 and 111.0 tonnes accordingly, do not submit this type of reporting to the statistical departments.

As a result the indicators in column 2 "Produced over the reporting period from the beginning of the year" are underestimated (137 tonnes totally for Druzhkovka city).

Similar contracts were concluded between the public utility "OZHKH YAGS" (Yasinovata city) and 108 legal persons, with total SHW amounts 15.1 thousand m³ (3.8 thousand tonnes). Only three of them submitted data to the statistical departments. Total reporting for Yasinovata city shows 217 tonnes of waste production.

All enterprises located in Krasniy Liman city and a number of districts in Donetsk Region (Alexandrovsky, Velikonovoselkovskiy, Volnovahskiy, Volodarskiy, Konstantinovskiy, Krasnoarmmeyskiy, Novoazovskiy, Slavianskiy, Shahterskiy) do not submit this type of reporting.

4. According to the above Instructions, submission of reporting is compulsory for Housing and Public Services, but mainly it is not submitted.

As was found out, local departments of housing and public services do not possess information on SHW depicted in form #14 mtp and thus do not set up the SHW databases in cities or districts.

From the stated above, it follows that the form in question, which is the only formal source of information on SHW in the region, it is impossible to receive the reliable information about the volumes of SHW, including accumulation and disposal of waste to the landfills.

3.2.2. Form N° 1- arrears (Housing and Public Services) «Report on payment recovery from population for housing, public services and electricity»

The form is approved by the Decree of the National Committee of Statistics of Ukraine N°346 of 15.10.2003 (Annex 2).

The form of reporting is adopted by the Order of the State Committee of Statistics of Ukraine on 15.10.2003 #346 (Annex 2).

It should be submitted on the 10th day of each month.

The form is to be filled by enterprises, organizations and institutions of any ownership form, ZHEKs, housing-construction and housing cooperatives that run the housing stock, and organizations rendering public services to the population.

The data is submitted to the local Department of National Statistics that processes this information and transfers it to the Central Department of Statistics in Donetsk Region together with the reference data.

The form consists of two parts.

1. Housing and public services' payments.
2. The status of the restructured housing and public services arrears paying off.

Part 1 contains the following information globally about housing and public services payments, including payments **for waste collection**:

- population arrears by the beginning of the reporting period;
- amounts billed to the population over the reporting period;
- paid by the population over the reporting period by the end of the claim period;
- population arrears by the end of the reporting period;
- total number of personal accounts;
- the number of personal accounts with arrears, including debts of 3 and more months.

Taking into account the received data it is possible to determine the level of payments recovery for all kinds of services, including payments for waste collection.

Thus, the analysis of the reporting form for the first quarter of 2006 showed that the payment recovery level made 81.1 % for the public utility "OZHKH YAGS" (Yasinovata city), 84.2 % for the public utility "Artemovskkommunspetstrans", 91.4 % for transport company N° 052805 (Druzhkovka city).

Part 2 pictures the situation regarding restructure of housing and public services arrears of the population without distribution by the particular service.

3.2.3. Form "Tax calculation of charge for environment pollution"

The form is approved by the Decree of the National Tax Administration of Ukraine N°587 of 20.12.2005 and should be filled by legal entities and their subdivisions as well as natural persons, private entrepreneurs (Annex 3).

The form should be submitted on a quarterly basis (progressive total) and totally for the year.

The data is submitted by the enterprises to the local departments of the National Tax Administration.

According to the current mechanism of payment collection for environmental pollution, the limits for disposal of solid household waste should be granted to the owners of the landfills and they pay for disposal of all solid household wastes on to the landfill. Consequently, this type of tax should be accounted in calculation of the cost price of the collection service and in tariff.

Companies that concluded contracts with transport companies for collection and disposal of SHW are exempt from receiving the limits and thus do not pay for SHW disposal.

The form, its part on the SHW data, shows actual SHW amounts and the limits for their disposal (in tonnes), the total tax payment for waste disposal, including amounts exceeding the limits.

It should be noted that not all enterprises pay the tax for the SHW disposal they collect and dispose on to the landfill.

Thus, the housing companies ordering waste collection service from the public utility "Kommuntrans" (Makeevka city), pay for the SHW collection. Permission for waste disposal is kept in the City Department of Housing and Public Services. That is why in this form the company shows the amount of payment only for own household waste disposal.

Public utility "OZHKH YAGS" Yasinovata city also pays only for own household waste disposal as it temporarily accumulates the solid household waste collected within the city on the local unauthorized dumpsite.

3.3. Analysis of branch reporting forms

3.3.1. Reporting form #1-SHW "Report on Solid Household Waste Management"

This form has been effective since the 1st of January 2007 in accordance with the Order of the Ministry of Construction, Architecture, Housing and Public Utility Services of Ukraine as of 19.09.2006 #308 agreed with the State Statistics Committee of Ukraine. It is to be provided on the annual basis.

It should be submitted by legal and natural persons – entrepreneurs working in the field of solid household waste management of different ownership and organisation forms that collect, transport and dispose SHW or accept SHW for recycling and/or utilisation:

The form should be provided before the 20th of January to structural subdivisions of housing and public utility services of local self-government bodies. Having generalised these forms the latter should send the form before the 1st of February to structural subdivisions of housing and public utility services of regional

state administrations. Before the 10th of February the latter submit the indicated reports to the central executive body on housing and public utility services of Ukraine.

The reports include the data about the volumes of collection, transportation, recycling and disposal of SHW and its components which are collected separately, as well as the volumes of waste recycled or utilised at SHW treatment facilities and the waste disposed at landfills. These data are placed in tables of sections 1-3. Section 4 contains data on SHW monitoring such as total number of landfills and dumpsites, amount of SHW collected and transported, characteristics of specialised vehicles, % of the inhabitants covered by SHW collection, economic indicators, etc.

Features of the table forms

Section 1. Collection and transportation of solid household waste (SHW)

The table consists of 12 groups of SHW and their components giving data about the total amount of collection and removal, including the differentiation on the destination sites: to the points of the secondary raw materials preparation, waste recycling facilities, landfills (dumpsites), etc.

Section 2. Solid household waste recycling and (or) utilization

It contains the data about volumes of SHW and their components received for recycling and utilisation; volumes of valuable components received after sorting, volumes of valuable components recycled after sorting; amount of electricity received; the remaining volume of non-recyclable waste indicating the destination for its final disposal (waste recycling plant or landfill).

Section 3. Solid household waste disposal on landfills (dumpsites)

The section indicates waste disposal volumes on the landfills (dumpsites) for six SHW groups and two groups of industrial waste (3rd and 4th classes of hazard) as well as volumes of other types of waste disposed at landfills (dumpsites).

Section 4. Monitoring of SHW management

It characterizes the SHW management sphere providing the data on the number of landfills and the occupied area, the amounts of waste collected and number of enterprises, special motor vehicles, coverage of the population with SHW collection services, economic indicators, etc.

The tables above are in the Annex 4.

3.3.2. Form N°1C – Housing utility “Report on operational costs and financial indicators of the enterprises dealing with maintenance of houses, constructions and near-housing territories“

It is approved by the Decree of the National Housing and Public Services Committee of Ukraine N° 224 of 16.12.2004 on agreement with the National Committee of Statistics of Ukraine.

The form is to be filled by economic operators that provide the services of houses and near-housing territories' maintenance, regardless the ownership forms and departmental subordination. The data is submitted to the Central Department of City-planning, Architecture and Housing and Public Services of the Regional State Administration.

After the indicators are integrated the form is submitted to the Ministry of Construction, Architecture and Housing and Public Services of Ukraine (Annex 5).

The part II “Services costs” indicates information about SHW collection costs.

Out of the enterprises under consideration only the public utility “OZHKKH YAGS” (Yasinovata city) which is a multi-profile enterprise operating in housing and public utility sector fills in this reporting form.

3.4. Analysis of institutional reporting forms in the field of SHW management

Quarterly and annual summarized forms of institutional reporting “Sanitary Cleaning of the Donetsk Oblast Populated Areas” are developed by the Central Department of City-planning, Architecture, Housing and Public Utility Services of the Regional State Administration on the basis of the data of local city and district departments of housing and public utility services received from the enterprises engaged in sanitary cleaning.

3.4.1. Characteristics and analysis of the summarised form “Sanitary Cleaning of the Donetsk Oblast Populated Areas for 2004-2005”

During the analysis the main form data for 2004-2005 have been generalised and compared.

The form contains the following indicators:

- number of population covered by sanitary cleaning (thousand people/ %), including people living in the private sector;
- number of enterprises engaged in sanitary cleaning;
- number of waste equipment and vehicles;
- coefficient of the equipment\vehicle use;
- volumes of SHW accumulation, thous. m³;
- volumes of SHW transported to landfills (dumpsites) (thous. m³);
- number and volumes of the removed unauthorized dumpsites (unit/thousand m³);
- tariff rate for solid household waste disposal;
- receivables and liabilities.

The data analysis for 2004-2005 shows that the lack of the methodology for form filling results in considerable constraints in characterisation of the situation in the field.

The Indicator “The number of population covered by sanitary cleaning activity»

The data analysis showed the following results.

1. Distortion of data about population covered by mechanized solid household waste collection (in most cases this concerns the private sector) in the cities: Shahtersk, Ugledar, Yasinovataya, Artemovsk, Debaltsevo, Dimitrovo, Zhdanovka, Kirovskoye, Konstantinovka, Krasnoarmeysk, Krasniy Liman, Marioupol, Slavyansk, in the districts: Amvrosievskiy, Volodarskiy, Maryinskiy, Novoazovskiy, Pervomayskiy, Slavianskiy, Starobeshevskiy.

One of the disadvantages of the form is that the mentioned indicator characterizes the population residing in the housing stock that is kept in the balance books of the local councils. Population living in the departmental stock is not accounted as the enterprises of the solid household waste collection activity do not have this data as well as the data about the population living in the housing cooperatives, the housing owners associations.

The amounts of the solid household waste collection from this category of population are included into the general amounts indicated in the contracts for the solid household waste collection services that are concluded with the companies and organizations owing the housing stock, and with the cooperatives and associations.

Thus, among the customers of SHW collection service by the public utility “OZHKH YAGS” (Yasinovata city) in 2006 (108 legal persons) is the group “The housing cooperatives, population” with the SHW collection amounts of 977 m³ (6.5 % of total planned amounts of collection from enterprises and organizations) without any indication of the population under service.

As a result, the population covered by the solid household waste mechanized collection is not fully registered and does not describe the factual situation on this service market.

2. The incorrect calculation of the private sector population covered by the mechanized solid household waste collection that is computed against the total population of a populated area.

3. Some districts of the region do not use the same approach in computing such indicators as population covered by the mechanized solid household waste collection and enterprises providing the SHW collection services taking into account the territorial division. Thus, there was one mechanized solid household waste collection enterprise in Novoazovskiy district indicated for 2004, and 16 such enterprises for 2005. As it was found out, this happened because in 2004 only the data about enterprises in Novoazovsk city was submitted, in 2005 the data was compelled within the whole district. The same method of computing was used for reporting on the number of waste equipment and vehicles.

The indicator “The volume of the solid household waste accumulation”

Absence of instruction for filling of the reporting leads to the situation when cities and districts approach this form in two different ways:

- 1) calculation according to the established norms;
- 2) calculation pursuant to the actual volumes which in fact duplicates the indicator “Actually removed SHW”.

Moreover, each city follows its own approach without clearly set principles.

Taking into account the number of population and the necessity to register waste produced wholly in a populated area, there is unfounded estimate of SHW accumulation volumes in the form.

Thus, this indicator is underestimated for 2004-2005 in cities: Dzerjinsk, Makeevka, Krasniy Liman, Selidovo; in districts: Amvrosievskiy, Maryinskiy, Starobeshevskiy, Shahterskiy, Yasinovatskiy, in 2004 – in Marioupol and Khartsizsk city.

Besides, there are errors in calculations. Thus, the SHW accumulation volumes for Artemovskiy district are 100 times underestimated - it makes 0.19 thousand m³ instead of 19.0 thousand m³.

In Torez city, the SHW accumulation norms for 2004 are provided in tonnes, but for 2005 – it is in m³. There is overestimation of the SHW production amounts because the amounts of waste from unauthorized dumpsites to be removed are included.

Comparison of the SHW collection amounts for 2004 and 2005 shows considerable difference between them: in Dzerdzhinsk, Donetsk, Marioupol, Torez, Debaltsevo, Makeevka cities.

In some cities and districts of Donetsk Region the SHW accumulation amounts for 2004 are not registered (Avdeevka, Dimitrovo, Slavyansk cities, Volodarskiy, Konstantinovskiy and Krasnoarmeyskiy districts).

The indicator “Actually removed solid household waste” in 2005

In some cities the annual amounts of the SHW collection are much lower than the amounts of their production. Thus, in Torez city there is 5.5 times underestimation (245.8 thousand m³ and 45.1 thousand m³ accordingly), in Gorlovka city – 3.8 times (659.6 thousand m³ and 169.0 thousand m³), in Dobropolye – 2.3 times (50.0 thousand m³ and 21.6 thousand m³), in Shakhtersk – 3.4 times (96.0 thousand m³ and 28.6 thousand m³).

Similar situation is in the following districts: Pershotravneviy – 2.9 times lower, Dobropolskiy – 2.6 times lower, Alexandrovskiy – 1.7 times lower. This data confirms the low level of population coverage by mechanized waste collection.

In some cases, the annual SHW collection amounts are much higher than the production amounts. Thus, in Makeevka the SHW collection was 4.6 times higher than production (253.7 thousand m³ and 55.2 thousand m³), in Maryinskiy district – 3.2 times higher (9.8 thousand m³ and 31.2 thousand m³), in Novoazovskiy district – 1.9 times higher (3.0 thousand m³ and 5.7 thousand m³), in Shahterskiy district – 6.4 times higher (2.5 thousand m³ and 16.0 thousand m³), in Yasinovatskiy district – 15.4 times higher (1.3 thousand m³ and 20.0 thousand m³).

It is necessary to point out some inaccuracies in the provided data. It is determined that in Krasnoarmeyskiy district the SHW collection amounts are given 10 times higher: 130.0 thousand m³ instead of 13.0 thousand m³.

The indicator “The liquidation of wild dumpsites”

There was determined a range of errors made by the enterprises when specifying the number of the liquidated wild dumpsites and their SHW volumes. Thus, in 2004 in Ugledar city there was 90.0 thousand m³ of the solid household waste removed when the wild dumpsites were liquidated instead of 0.09 thousand m³. In Krasnoarmeysk city in 2005 36 wild dumpsites were removed with the SHW amount of 9.0 thousand m³ instead of 8 dumpsites with 1.0 thousand m³ of the solid household waste.

There is discrepancy regarding the data about the number of wild dumpsites removed and volumes of SHW for 2004-2005 (Gorlovka, Selidovo, Konstantinovka, Krasniy Liman cities), the absence of such data in Avdeevka (2004-2005), Dimitrovo cities, Volodarskiy, Konstantinovskiy and Pershotravneviy districts.

The indicator “Tariff”

The form does not name the group of consumers for the current SHW collection tariff (population, other types of consumers or average tariff). It is not specified if tariff includes the VAT. As a result the enterprises submit data that cannot be compared. Thus, information of the public utility Artemovskkommunspetstrans” (Artemovsk city) for the first quarter of 2006 contains the average tariff for SHW collection, public utility “OZHKH YAGS” (Yasinovata city) and the subsidiary “UkrEkologia” (Khartsizsk city) indicate the tariff set for population. In the reporting form of Makeyevka for 2005 the tariff for private sector population is indicated.

The form does not differentiate if the tariff is fixed or not (if it is derived of the apartment rent payments).

The form does envisage such feature as the level of the SHW collection payment recovery from population.

Taking into account this form it is impossible to analyse the tariff policy globally for the Region.

In 2004 some cities and districts did not submit the data on such aspects as the amount of sanitary cleaning enterprises (Dimitrovo, Marioupol cities, Volodarskiy, Dobropolskiy, Konstantinovskiy, Krasnoarmeyskiy districts); the number of waste equipment and vehicles (Dimitrovo city, Dobropolskiy, Konstantinovskiy, Krasnoarmeyskiy districts).

It is necessary to note that the data from some cities and districts is not always submitted to the Central Department of City-planning, Architecture and Housing and Public Services of the Regional State Administration in written form. In some cases the data is reported by telephone that causes the difficulties in its processing and use.

Based on the information above it is obvious that this method of the form filling does not provide the estimation and proper analysis of the system of the SHW management, including the dynamics of its annual development.

To improve the form “Sanitary cleaning” the Central Department of City-Planning, Architecture and Housing and Public Services of the Regional State Administration is recommended to work out and later submit to the local housing and public services departments the methodology of the form filling taking into account the following aspects:

1. Measuring the “Population covered by the sanitary cleaning activity” it is necessary to:
 - include the whole population of a populated area, including population living in the departmental housing stock, housing cooperatives, associations of the housing owners and etc.;
 - when measuring the percentage of the private sector population covered by the mechanized SHW collection this indicator should be showed against the total private sector population, not globally for a populated area.
2. It is necessary to specify the procedure for the data submission by districts on such aspects as the population covered by the mechanized SHW collection and enterprises of the SHW collection services, taking into account the territorial division.
3. Calculation of “Volume of accumulated SHW” should be based on normative waste production volumes with account of all producers: population, enterprises, institutions and organizations.
4. The form should be additionally supplied with the indicator “The level of the SHW collection payment recovery from population”.
5. In the indicator “Tariff” it is necessary to specify the type of tariffs stated by the enterprises (tariff for population or average tariff), if the VAT is included in it, if the tariff is fixed or derived out of the apartment rent payment.

6. Any reporting information should be submitted only in written form.

3.4.2. Analysis of the summarised form “Sanitary Cleaning in Donetsk Oblast in 2005”

This form has been designed by the National Housing and Public Utility Service Committee of Ukraine in 2005. It is compiled for the oblast by the Central Department of City-planning, Architecture, Housing and Public Utility Services of the Regional State Administration based on the data obtained from sanitary cleaning enterprises. As distinct from the above-mentioned form on sanitary cleaning which is an internal regional form, containing 13 indicators, the form in question includes 20 indicators.

As soon as the form #1-SHW “Report on Solid Household Waste Management” has been adopted the above-mentioned form is no longer used. However, considering the fact that many indicators of this form are included into section 4 “Monitoring SHW Management Activities” of this form we will analyse below such an indicator as “Total number of landfills and dumpsites”, taking into account the following drawbacks:

1. The number of landfills (dumpsites) is indicated not in full scope. Thus, in Debaltsevo city the availability of one landfill is named. At the same time there is the landfill in Svetlodarsk town that belongs to Debaltsevo city according to the territorial division.
2. There is no data on the departmental landfills exploitation. Thus, it is indicated about the absence of the landfills in Avdeevka city. At the same time there is a landfill owned by “Avdeyevsky By-product-Coking Plant” company where the SHW collected from population is disposed.
3. There is no uniform approach to determine the number of dumpsites in districts. As a result, the information concerning their factual number is wrong.

Thus, it is indicated as 1 in Alexandrovskiy, Novoazovskiy districts, 2 in Maryinskiy, the landfills are indicated as absent in Dobropolskiy and Konstantinovskiy districts. At the same time this indicator is equal to 26 in Artemovskiy district, 32 – in Velikonovoselkovskiy, 33 – in Telmanovskiy, 29 – in Starobeshevskiy district.

4. The total number of landfills (dumpsites) (62) as well as the number of overloaded and environmentally dangerous landfills and dumpsites is underestimated. They are indicated as 6 and 12.

At the same time, according to the State Department of Ecology and Natural Resources in Donetsk Oblast, all in all in the oblast there are 111 owners of landfills (the number of landfills is 112 considering the fact that two landfills in Gorlovka belong to one owner).

However, only 36 landfills obtained permits from the State Department of Ecology and Natural resources for disposal of SHW. This shows the non-conformity of the rest of the landfills with the sanitary standards.

4. Comments

1. The analysis of the existing reporting (by 2007) in the sphere of the SHW management shows its imperfection. As a result in the region there is no official database characterizing this sphere.

2. The reporting form #1 – SHW “Report on Solid Household Waste Treatment” introduced since 01.01.2007 will help to monitor the state of solid household waste field and introduce reporting aiming at establishment and implementation of the national policy in this field.

3. Out of analysed 26 types of the reporting submitted by the SHW collection enterprises only 5 reporting forms directly concern the sphere of the solid household waste management. The rest of the forms just reflect on the results of production and financial activity and are filled in by any companies regardless ownership form and type of economic activity based on the current laws of Ukraine.

4. The statistical reporting form in the sphere of the solid household waste management characterizing waste production, use and delivery is N°14-mtp “Report on the secondary raw materials and industrial waste production, use and delivery” is unacceptable for the group “solid household waste” as it features production, use and delivery of the recyclable materials from the industrial waste that is not the solid household waste.

This form cannot serve the database for the analysis of the existing situation in the sphere of the solid household waste management and the development forecast because of its imperfection and the lack of the proper control by the local departments of statistics over the businesses’ reporting submission.

5. The Instructions regarding filling of the mentioned form approved by the Decree of the National Committee of Statistics of Ukraine N°331 of 27.10.2005 do not give the clear explanations for filling of the indicators classified as 034 “The solid household waste”. This leads to different approaches to its filling.

6. With the existing procedure when the enterprises submit the data on the form N°14-mtp directly to the Central Department of Statistics in Donetsk Region, the database of the SHW amounts is not formed in the cities and districts because the generalized annual form is not obligatorily submitted to the local level.

7. The internal institutional reporting forms “The sanitary cleaning of populated areas of the region” have considerable drawbacks resulting from different approaches to their compilation.

5. Recommendations

1. The Central Department of City-planning, Architecture, Housing and Public Utility Services of the Regional State Administration should:

- organise a seminar with the specialists of the oblast public utilities devoted to the results of the form development, considering that the form of reporting №1 – SHW “Report on Solid Household Waste Treatment” has been introduced since 01.01.2007 and in order to ensure that the data entered into this form in the future are full and reliable;
- develop and provide to rayon and city departments of housing and public utility services the guidelines for institutional reporting on sanitary cleaning of cities and rayons of the oblast;
- analyse the reporting of companies in the field of SHW management;
- produce information about the existing situation in the field of SHW management attaching it to the mentioned above form.

2. Units of measurement

New forms of reporting and SHW databases should contain data both in cubic meters (m³) and tonnes of waste (tons). Such an approach has been already taken into account by the Ministry of Construction of Ukraine while it ratified the form of reporting #1-SHW “Report on Solid Household Waste Management”.

The introduction and use of weighbridges will help gradually to use “tons” as a unit of measurement of waste.

ANNEXES

Annex 1. Forms of statistical reporting N°14-mtp «Report on production, use and supply of the secondary raw materials and industrial waste»

Таблиця За.

УТВОРЕННЯ, ВИКОРИСТАННЯ У ПСТАВКА ВІСРІВНО СІРВІВНН У ВУЛОДІВ ВІРВІВНІВ

за 2005 рік

Код	Кількість	Назва	Утворено	Одержано	в н.м.т.					Всього	Поставлено	Видано	Навмисно	Всього	Видано	Навмисно
					на	на	на	на	на							
14	389	1763463	172363	509553	195307	184	182764	575171	1767060							
ДОНЕЦЬКА ОБЛАСТЬ																
МІСТА ОБЛАСТНОГО ПІДПОРЯДУВАННЯ																
ДОНЕЦЬКО БІЛАСЬКА																
100	369	1763463	164181	503373	193007	-	168	162823	560974	1767652						
101	105	22	35362	338101	116625	-	-	51079	322374	32						
102	4	-	8627	-	-	-	159	-	8468	-						
103	12	-	5074	24242	24242	-	-	320	26976	-						
106	50	119186	33835	1401	-	-	-	45683	30754	77985						
109	3	120234	4689	6340	5450	-	-	63	1791	131409						
112	4	-	618	-	-	-	-	57	561	-						
113	2	-	26	-	-	-	-	19	7	-						
115	12	-	19781	-	-	-	-	20	19761	-						
116	1	-	967	-	-	-	-	-	967	-						
117	3	1462682	137	17264	22775	-	-	15	120	1485459						
120	11	-	195	-	-	-	-	20	175	-						
121	3	3798	139	4871	3467	-	-	-	8788	20						
123	12	45	17821	-	-	-	-	359	12507	-						
125	1	-	61	-	-	-	-	-	61	-						
126	6	-	211	-	-	-	-	-	211	-						
129	20	7	8095	66939	-	-	-	1965	73036	-						
132	11	46	8427	-	-	-	-	50	6433	-						
135	26	6	5093	-	-	-	-	1225	3874	-						
136	4	4316	1841	4991	4787	-	-	101	233	10626						
138	16	382	6274	400	-	-	-	113	6688	331						
141	8	-	1313	9	3	-	-	180	1142	-						
144	9	-	290	-	-	-	-	200	84	6						
147	16	1	7648	4910	1000	-	-	297	12261	1						
148	3	42278	864	7564	7564	-	-	691	173	49942						
150	11	10458	1297	6119	4049	-	-	25	6703	11141						

М. ШАХТАРСЬК	153	12	-	279	-	-	-	-	167	112	-
М. ЯСИНУВАТА	153	4	-	217	-	-	-	-	154	12774	-
РАЙОН ДОНЕЦЬКО ОБЛАСТУ	200	20	-	8182	6180	2500	-	16	141	14197	9
АНДРСЬКІСЬКИЙ РАЙОН	206	6	-	114	-	-	-	-	73	39	-
АРТЕВІСЬКИЙ РАЙОН	209	3	-	207	-	-	-	-	22	185	-
ДОНСЬКОДОНСЬКИЙ РАЙОН	220	2	-	53	-	-	-	-	41	12	-
КРАСНОАРМІЙСЬКИЙ РАЙОН	227	1	-	6	-	-	-	6	-	-	-
МАР'ІНСЬКИЙ РАЙОН	233	1	-	2	-	-	-	-	-	2	-
ПЕРШОТРАВЕВІЙ РАЙОН	239	2	-	4930	6180	2500	-	-	-	11110	-
СТАРОБЕШЕВСЬКИЙ РАЙОН	245	1	-	2739	-	-	-	-	-	2739	-
ТЕЛЬМАНУСЬКИЙ РАЙОН	248	2	-	33	-	-	-	10	-	15	9
ШАХТАРСЬКИЙ РАЙОН	252	2	-	3	-	-	-	-	3	-	-

- 2 -

Таблиця 2а.

(продовження)

УТВОРЕННЯ, ВИКОРИСТАННЯ У ПОСТАВКА ВТОРИННО Сировини у ВИХОДАХ ВИРІЗНИЦТВА

за 2005 рік

ВСЬОГО ТИПІВ ПОВІТОР, ТОНН

ХАРКІВСЬКА ОBLASTЬ	Неввезення		Утворення		Зберігано		Використання		Використання		Використання	
	на початку звітного періоду	на кінець звітного періоду	на початку звітного періоду	на кінець звітного періоду	всього	всього	всього	всього	всього	всього	всього	всього
А	5	8	1	2	3	4	5	6	7	11	15	16
ЯСИНУВАТСЬКИЙ РАЙОН	255	1	-	-	-	-	-	-	-	-	-	95

Таблиця 26.

УТВЕРЖЕННЯ ВИКОРИСТАННЯ У ПЕСТИКАЦІЙНІЙ ВІСНОВІ СІРОВОКИ У ВИДІВІВ ВИРІВНИЦІВ
за 2005 рік

	ВІДВИДИ ТВЕРДИХ ПЕСТИЦИДІВ, ТОНН													
	А	Б	В	Г	Д	Е	Ж	З	И	К	Л	М	Н	О
ДОНЕЦЬКА ОБЛАСТЬ	14	389	184	-	-	163	102784	57400	-	-	-	-	-	-
МУСТА ОБЛАСТНОГО ПІДПРИЄМСТВА														
ДОНЕЦЬКОЇ ОБЛАСТІ	100	369	168	-	-	163	102803	57259	-	-	-	-	-	-
М. АХЦЕЦЬ	101	105	-	-	-	159	51079	51079	-	-	-	-	-	-
М. АВАЗ'ЄВА	102	4	159	-	-	-	-	-	-	-	-	-	-	-
М. АРТЕМУСЬК	103	12	-	-	-	-	320	320	-	-	-	-	-	-
М. ГОРДУВА	106	50	-	-	-	-	45683	119	-	-	-	-	-	-
М. БЕБАШЕВЕ	109	3	-	-	-	-	63	63	-	-	-	-	-	-
М. ДЗЕРЖИНСЬК	112	4	-	-	-	-	57	57	-	-	-	-	-	-
М. ДИМИТРОВ	113	2	-	-	-	-	19	19	-	-	-	-	-	-
М. ДОБРОВОЛЯ	115	12	-	-	-	-	20	20	-	-	-	-	-	-
М. ДОКУЧАЄВСЬК	116	1	-	-	-	-	-	-	-	-	-	-	-	-
М. АРХИЗЬКА	117	3	-	-	-	-	15	15	-	-	-	-	-	-
М. ІНАКУТІВЕ	120	11	-	-	-	-	20	20	-	-	-	-	-	-
М. ХВАРЬІВА	121	3	-	-	-	-	-	-	-	-	-	-	-	-
М. МАРУПІЛЬ	123	12	-	-	-	-	359	359	-	-	-	-	-	-
М. КУРОВСЬКЕ	125	1	-	-	-	-	-	-	-	-	-	-	-	-
М. КОСТАНТИНІВКА	126	6	-	-	-	-	-	-	-	-	-	-	-	-
М. КРАМАТОРСЬК	129	20	-	-	-	-	1983	1983	-	-	-	-	-	-
М. КРАСНОАРМІЙСЬК	132	11	-	-	-	-	50	50	-	-	-	-	-	-
М. МАЛОЇ ВКА	135	26	-	-	-	-	1725	1725	-	-	-	-	-	-
М. НОВОТРОЇВКА	136	4	-	-	-	-	101	101	-	-	-	-	-	-
М. СЕЛІЩЕ	138	16	4	-	-	4	113	113	-	-	-	-	-	-
М. СЛОБІДЬСЬК	141	8	-	-	-	-	180	180	-	-	-	-	-	-
М. СІВЖИЄ	144	9	-	-	-	-	200	200	-	-	-	-	-	-
М. ТОРЕЗ	147	16	-	-	-	-	297	297	-	-	-	-	-	-
М. ВУГЛЕДАР	148	3	-	-	-	-	691	691	-	-	-	-	-	-

М. УАРИЦЫК	150	11	5	-	-	25	25	-	25	-	-	-	-
М. ШАХТАРСЬК	153	12	-	-	-	167	167	-	167	-	-	-	-
М. ЯСМУВАТА	155	4	-	-	-	154	154	-	154	-	-	-	-
РАЙОН АЗЕНЬКО* ОБЛАСТЬ	200	20	16	-	-	141	141	-	141	-	-	-	-
АНГРОС*ВСЬКИЙ РАЙОН	206	5	-	-	-	75	75	-	75	-	-	-	-
АРТЕНУВСЬКИЙ РАЙОН	209	3	-	-	-	22	22	-	22	-	-	-	-
ДОБРЮПЛЬСЬКИЙ РАЙОН	220	2	-	-	-	41	41	-	41	-	-	-	-
КРАСНОАРХАНСЬКИЙ РАЙОН	227	1	6	-	-	-	-	-	-	-	-	-	-
ИВР*ЧЕВСЬКИЙ РАЙОН	233	1	-	-	-	-	-	-	-	-	-	-	-
ПЕРВОТРАВЕНЬКИЙ РАЙОН	239	2	-	-	-	-	-	-	-	-	-	-	-
СТАРОВЕШЕВСЬКИЙ РАЙОН	245	1	-	-	-	-	-	-	-	-	-	-	-
ТЕЛМАНУВСЬКИЙ РАЙОН	248	2	10	-	-	-	-	-	-	-	-	-	-

Таблиця 26. УТВЕРЖЕННЯ ВИКРИСТАННЯ У ПОСТАВКУ ВІДРИННО* СМІТОВИНИ У ВИХОДІВ ВИРОБНИЦТВА (ПРОДОВЖЕННЯ)

- 2 -

УТВЕРЖЕННЯ ВИКРИСТАННЯ У ПОСТАВКУ ВІДРИННО* СМІТОВИНИ У ВИХОДІВ ВИРОБНИЦТВА
за 2005 рік

Код району	Використання	Всього	в т.ч.:		на (на виробництво)	на (на виробництво)	в т.ч.:		на (на виробництво)	на (на виробництво)	на (на виробництво)	на (на виробництво)	на (на виробництво)
			на (на виробництво)	на (на виробництво)			на (на виробництво)	на (на виробництво)					
А	Б	В	7	8	9	10	11	12	13	14			
ШАХТАРСЬКИЙ РАЙОН	252	2	-	-	-	-	3	-	-	-	-	-	-
ЯСМУВАТСЬКИЙ РАЙОН	255	1	-	-	-	-	-	-	-	-	-	-	-

Код ЄДРПОУ 0 5 4 4 8 8 6 3

Державне статистичне спостереження

Конфідційність статистичної інформації забезпечується
статтею 21 Закону України "Про державну статистику"

Порушення порядку подання або використання даних державних статистичних спостережень тягне за собою відповідальність, яка встановлена статтею 186 Кодексу України про адміністративні правопорушення

ЗВІТ ПРО УТВОРЕННЯ, ВИКОРИСТАННЯ І ПОСТАВКУ
ВТОРИННОЇ СИРОВИНИ І ВІДХОДІВ ВИРОБНИЦТВА
за січень - лютий 2003 року

Подають:	Терміни подання
Підприємства - юридичні особи, установи, організації та їх відокремлені підрозділи незалежно від виду економічної діяльності, форми власності, господарювання, у яких вторинна сировина та металобрухт утворюються, використовуються або здійснюється їх поставка, а також підприємства і організації, які здійснюють ліквідацію, деревобробку - гаранту державної статистики за місцезнаходженням	на 10 день після звітного періоду

Форма №14-мпт

ЗАТВЕРДЖЕНО
Наказ Держкомстату України
14.10.2004 р. № 560

Піврічна (і півріччя, рік)
Поштова

Найменування організації - складача інформації <i>СП "Агроевекхолмуніспейтраис"</i>						
Поштова адреса <i>ул. Совєтська, 218</i>						
Коди організації - складача						
за ЄДРПОУ	території (КОАТУУ)	виду економічної діяльності (КВЕД)	форми власності (КФВ)	організаційно-правової форми господарювання (КОПФГ)	міністерства, іншого центрального органу, якому підпорядкована організація - складач інформації (КОДУ)*	
1	2	3	4	5	6	7
<i>05448863</i>	<i>1440300000</i>	<i>90.00.1</i>	<i>32</i>	<i>150</i>		

* Тільки для підприємств державного сектору.

Номенклатура вторинної сировини та відходів виробництва
(для складання розділу I)

Код	Найменування та одиниці виміру	Код	Найменування та одиниці виміру	Код	Найменування та одиниці виміру
001	Відходи паперу та картону, тонн	022	Відходи залізовмісні, тонн	038	Біогас, т.у.п.
060	з них використана упаковка паперова та картонна, тонн	023	Відходи вуглевидобутку і вуглезбагачення - всього, тонн	039	Породи розкривні, попутні скельні та інші для виробництва щебеню, куб.м
002	Сировина полімерна вторинна, тонн	024	Відходи вуглевидобутку і вуглезбагачення для виробництва будівельних матеріалів, тонн	040	Породи розкривні, попутні скельні та інші для виробництва відсіву кам'яного рядового, куб.м
003	Матеріали текстильні вторинні, тонн	025	Відходи збагачення поліметалічних руд для виробництва недогарків ртутного виробництва, куб.м	041	Породи розкривні, попутні скельні та інші для виробництва піску закладного, тонн
004	Відходи шкіряні, тонн	026	Відходи збагачення поліметалічних руд для виробництва піску скляного, тонн	042	Породи розкривні, попутні скельні для будівництва гідропруд та інших робіт, куб.м
005	Шини зношені, тонн	027	Відходи збагачення поліметалічних руд для виробництва піску будівельного, тонн	043	Породи розкривні, попутні скельні для будівництва гідропруд та інших робіт, куб.м
006	Склобій покупний, тонн	028	Відходи збагачення поліметалічних руд для виробництва піску формового, тонн	044	Глини бентонітові для виробництва керамзиту, тонн
007	Фосфогіпс, тонн	029	Відходи будівельного виробництва - бетон і залізобетон, куб.м	045	Вичавки виноградні (сири), тонн
008	Недогарки піритні, тонн	030	Відходи вапнякові, тонн	046	Вичавки яблучні (сири), тонн
009	Шлаки доменного виробництва, тонн	031	Відходи вапняково-сірчані, тонн	047	Кісточки плодів, тонн
010	Шлаки сталеплавильного виробництва, тонн	032	Відходи вапняково-магнієві, тонн	048	Костриця луб'яних волокон, тонн
011	Шлаки феросплавного виробництва, тонн	033	Відходи крейди, тонн	049	Жом буряковий, тонн
012	Шлаки нікелевого виробництва, тонн	034	Відходи тверді побутові, тонн	050	Барда м'ясна післярідждова, тонн
013	Шлаки ливарного виробництва, тонн	035	Канати сталеві відпрацьовані, тонн	051	Барда зернокартопляна, тонн
014	Зола і золошлакові відходи теплових електростанцій та інших спалювальних установок, тонн	036	Суміші формові відпрацьовані, тонн	052	Дефекат, тонн
015	Із загальної кількості золи і золошлакових відходів теплових електростанцій - суха і мокра, тонн	037	Шлами червоні, тонн	053	Лушпиння соняшникове, тонн
016	Лігнін (абсолютно сухий), тонн			054	Сироватка молочна - товарна, тонн
017	Купорос залізний, тонн			055	Дробина пивна, тонн
018	Суспензії дистилерні, тонн			056	Відходи деревини, щільн.куб.м
019	Кислота сірчана гідролізна, тонн			057	з них тирса, щільн.куб.м
020	Відходи графітовмісні, тонн			058	Гумові відходи, тонн
021	Відходи титано-магнієвого виробництва, тонн			059	Зернові відходи, тонн
				060	Стрижні початків кукурудзи, тонн

Розділ І. Утворення, використання та поставка

Найменування вторинної сировини, відходів виробництва	Одиниця виміру	Код рядка	Наявність на початок звітного періоду	Утворилося (поточний вихід) за звітний період з початку року	Одержано відходів зі сторони з них:				
					Всього	від інших підприємств та організацій		від фізичних осіб - суб'єктів підприємницької діяльності	як імпорт
						3	4		
Тверді побутові відходи	тонн	034	-	-	24242	24242	-	-	

Витрати на зберігання та видалення відходів, грн. (код 303) 504 614=
Площа, яку займають відходи у відвалах і накопичувачах, що знаходяться на балансі підприємства, га (код 304) 10,28

вторинної сировини і відходів виробництва

Код рядка	Використано				Поставлено (продано)				Видалено, знесходже- но та захоронено відходів	Наяв- ність на кінець звітного періоду
	Всього	з них:			Всього	з них:				
		на виробництво продукції вироб- ничо-технічного призначення	на виробництво споживчих товарів	на паливні потреби		іншим під- приємствам та організа- ціям	фізичним особам- суб'єктам підприємницької діяльності	на експорт		
В	7	8	9	10	11	12	13	14	15	16
									24262	

Розділ II. Утворення, використання

Найменування брухту і відходів	Код рядка	Наявність на початок звітного періоду (у тому числі давальницького брухту і відходів)	Утворилося (поточний вихід) за звітний період з початку року	Одержано брухту і відходів зі сторони - всього	у тому числі:				
					від суб'єктів господарської діяльності, що не мають ліцензії на діяльність з брухтом і відходами	від суб'єктів господарської діяльності, що мають ліцензії на діяльність з брухтом і відходами	від населення	як імпорт	давальницького брухту і відходів
А	Б	1	2	3	4	5	6	7	8
Сталевий брухт і відходи (без зливок для переплавлення, одержаних із брухту), тонн	061								
у т.ч. легований, тонн	065								
Зливи для переплавлення (шихтові зливи), одержані із брухту	066								
Інші види брухту і відходів чорних металів, тонн	070								
Брухт і відходи: Алюмінієві, кг	071								
Мідні, кг	072								
Латунні, кг	073								
Бронзові, кг	074								
Свинцеві, кг	075								
Цинкові, кг	076								
Олов'яні, кг	077								
Нікелеві, кг	078								
Титанові, кг	079								
Кобальтові, кг	080								
Магнієві, кг	081								
Мідно-нікелевих сплавів, кг	082								
Інші види брухту і відходів кольорових металів, кг	090								

га поставка брухту і відходів чорних та кольорових металів

Код рядка	Використано всього	у тому числі:				Поставлено (продано) всього	у тому числі:				Наявність на кінець звітного періоду (у тому числі давальницького брухту і відходів)
		на власне металургійне виробництво	на інші виробничо-технічні цілі	на ремонтно-експлуатаційні потреби	давальницького брухту і відходів		металургійним підприємствам, спеціалізованим металургійним переробним підприємствам	іншим суб'єктам господарської діяльності з металобрухтом	на експорт	давальницького брухту і відходів	
Б	9	10	11	12	13	14	15	16	17	18	19
061											
065											
066											
070											
071											
072											
073											
074											
075											
076											
077											
078											
079											
080											
081											
082											
090											

Кількість підприємств (організацій), які знаходяться на самостійному балансі, включених до звіту (код 199) _____

«10» лютого 2006 р.

Греченко В. Ч. 98
прізвище і № телефону виконавця

Керівник Толєков А. В.
підпис, прізвище, ініціали

Головний бухгалтер Григор'єва Т. А.
підпис, прізвище, ініціали

Annex 2. Form N°1 - arrears (Housing and public services) «Report on payment for housing and public services and electricity by population»

Annex 3. Form «Tax calculation of charge for environmental pollution»



Відмітка про одержання
(штамп органу державної
податкової служби)

УЗГОДЖЕНО
Рішення комітету Верховної
Ради України з питань фінансів і
банківської діяльності
01.03.2005 №06-10/10-187

Голова Комітету С.В.Буряк

ЗАТВЕРДЖЕНО
Наказ Державної податкової
адміністрації України

17.03.2005 № 111
ЦЕНТРАЛЬНО-МІСЬКА МІЖРАЙОННА
ДІПІ М.МАКІВКА
редакційна ДПІ України
від 20.12.2005 р. № 587/л
ОТРИМАНО
Вх. №
" 05 ТРА 2006 р.

1	Податковий розрахунок збору за забруднення навколишнього природного середовища	<input checked="" type="checkbox"/> звітний
		<input type="checkbox"/> новий звітний
		<input type="checkbox"/> уточнюючий

2	Наростаючим підсумком за	I квартал	<input checked="" type="checkbox"/>	півріччя		9 місяців		рік		2	0	0	6	року
---	--------------------------	-----------	-------------------------------------	----------	--	-----------	--	-----	--	---	---	---	---	------

Тривалість базового податкового (звітного) періоду зазначається позначкою "х"

3	Повна назва (прізвище) платника* КП "Коммунтранс"	<input checked="" type="checkbox"/> юридична особа та її відокремлені підрозділи
		<input type="checkbox"/> фізична особа - підприємець

4	Ідентифікаційний код за ЄДРПОУ або ідентифікаційний номер з ДРФО	3	2	4	4	2	3	1	6		
	Код виду економічної діяльності (КВЕД)	9	0	.	0	0	.	3			

5	Код органу місцевого самоврядування за місцем податкової реєстрації платника за КОАТУУ	1	4	1	3	5	3	6	9	0	0
---	----------------------------------------------------------------------------------------	---	---	---	---	---	---	---	---	---	---

6	Місцезнаходження платника	Поштовий індекс	8	6	1	3	0
	86130, м.Макеєвка, Щорса, б.1	Міжміський код					
	Електронна адреса**	Телефон	5	2	3	5	9
		Факс**					

7	До державної податкової інспекції (адміністрації) в ЦЕНТРАЛЬНО-МІСЬКА МІЖРАЙОННА ДПІ М.МАКІВКА
---	---------------------------------------------------------------------------------------------------

* При зазначенні повної назви платника дозволяється скорочення його організаційно-правової форми діяльності (ТОВ, ЗАТ, ВАТ тощо).

** Зв'язанням платника.

32442316

354126656

Назви забруднюючих речовин, види пального та їх технологічні ознаки (1)	Фактичні обсяги викидів, використаного пального, скидів, розміщення відходів, тонн (одиниць (2))	Нормативи збору, згідно з додатком 1 до Порядку встановлення нормативів збору, затвердженого постановою КМУ від 01.03.99 №303 грн./т (грн./1одиницю (2))	Коефіцієнт, установлений в останньому абзаці додатка 1 до Порядку встановлення нормативів збору, затвердженого постановою КМУ від 01.03.99 № 303	Коригуючі коефіцієнти (коефіцієнти) до нормативів збору		Ліміти скидів розміщення відходів, тонн (одиниць (2))	Суми збору, обчисленого в межах ліміту, грн. коп. к. 2 або к. 7 (якщо к. 2 > к. 7) х к. 3 х к. 4 х к. 5 х к. 6	Суми збору, обчисленого за понадлімітні обсяги, грн. коп. якщо к.2 > к.7 (к.2 - к.7) х к.3 х к.4 х к.5 х к.6 х 5	За суму збору, грн. коп. к.2 х к.3 х к.4 х к.5 х к.6 (для р.1 і р.2) та к.8 + к.9 (для р.3 і р.4)
				5	6				
1	2	3	4	5	6	7	8	9	10
1. Нараховано збору за викиди стаціонарними джерелами забруднення, усього (3)									15,77
Вплив сполук 0.01-0.1	0,001500	80,0000	2,373	1,35	1,25	X	X	X	0,48
Сварочная аэрозоль	0,002600	572,0000	2,373	1,35	1,25	X	X	X	5,96
Свинец	0,000020	3'390,0000	2,373	1,35	1,25	X	X	X	0,27
Вплив сполук 0.1-більше 10 мг/куб.м	0,249000	3,0000	2,373	1,35	1,25	X	X	X	2,99
Марганець та його сполуки	0,000010	633,0000	2,373	1,35	1,25	X	X	X	0,03
Азоту оксиди	0,000050	80,0000	2,373	1,35	1,25	X	X	X	0,02
Взвешенные частицы	0,406000	3,0000	2,373	1,35	1,25	X	X	X	4,88
Азоту оксиди	0,000800	80,0000	2,373	1,35	1,25	X	X	X	0,26
Вуглецю окис	0,073000	3,0000	2,373	1,35	1,25	X	X	X	0,88
2. Нараховано збору за викиди пересувними джерелами забруднення, усього (3)									658,32
Бензин неетилований	21,100000	4,5000	2,373	1,35	1,25	X	X	X	380,22
Дизельне пальне	2,700000	4,5000	2,373	1,35	1,25	X	X	X	48,65
Стиснений природний газ	19,100000	3,0000	2,373	1,35	1,25	X	X	X	229,45
3. Нараховано збору за скиди у водні об'єкти, усього (3)									-
									-
									-
4. Нараховано збору за розміщення відходів, усього (3)									173,94
Отходы электродов	0,004000	0,3000	2,373	3,00	1,00	-	-	0,04	0,04
Аккумуляторы	0,015000	3,0000	2,373	3,00	1,00	-	-	1,60	1,60
Отходы красок	0,003880	0,7500	2,373	3,00	1,00	-	-	0,10	0,10
Шлак от мойки машин	1,300000	3,0000	2,373	3,00	1,00	-	-	138,82	138,82
IV кл. небезпеки відходів - малонебезпечні, в т.ч нетоксичні відходи гір/доб пром	4,160000	0,3000	2,373	3,00	3,00	4,160000	26,65	-	26,65
Автошини	0,630000	0,3000	2,373	3,00	1,00	-	-	6,73	6,73
5. Нараховано збору з початку року, усього (р.1.+ р.2 + р.3 + р.4)									848,03
6. Нараховано збору за попередній звітний період (квартал, півріччя, 9 місяців), усього									-
7. Нараховано збору за звітний квартал, усього (р.5 - р.6)									848,03
8. Нараховано збору за даними раніше поданого податкового розрахунку, що уточнюється, усього (р.7 розрахунку, що уточнюється) (4)									-
9. Сума збору (недоплата), яка збільшує податкове зобов'язання у зв'язку з виправленням помилки (р.7-р.8) або (р.9 або сума р.9 додатку(ків)) (5)									-
10. Сума збору, яка зменшує податкові зобов'язання у зв'язку з виправленням помилки (р. 8 - р. 7) або (р.10 або сума р.10 додатку(ків)) (5)									-
11. Сума штрафу (нараховується платником самостійно відповідно до пункту 17.2 статті 17 Закону України									-

32442316

354126658

Зазначаються: клас небезпечності, орієнтовно-безпечний рівень впливу сполук (мг/куб. метрів), концентрація забруднюючих речовин (мг/літр), клас безпеки відходів та рівень небезпечності відходів (табл.1.2, 1.8, 1.9 додатка 1 до постанови Кабінету Міністрів України від 01.03.99 №303 "Про затвердження Порядку оновлення нормативів збору за забруднення навколишнього природного середовища і стягнення цього збору").

- 2) Для обладнання та приладів, що містять ртуть, елементи з іонізуючим випромінюванням, люмінесцентних ламп.
- 3) За потреби кількість рядків розділів може бути збільшена.
- 4) Заповнюються у разі подання уточнюючого розрахунку, що містить виправлені показники.
- 5) Заповнюються у разі подання уточнюючого розрахунку, що містить виправлені показники, та у разі зазначення уточнених показників у складі звітнього або нового звітнього розрахунку за будь-який наступний податковий період, протягом якого платником були самостійно виявлені помилки
- 6) Заповнюються у разі зазначення уточнених показників у складі звітнього або нового звітнього розрахунку за будь-який наступний податковий період, протягом якого платником були самостійно виявлені помилки.

Відповідно до підпункту "б" пункту 17.2 статті 17 Закону України "Про порядок погашення зобов'язань платників податків перед бюджетами та державними цільовими фондами" до цього податкового розрахунку додається(ються) додаток(ки) щодо перерахунку податкового зобов'язання збору за забруднення навколишнього природного середовища за минулий період

Звітний період _____ року

Інформація, наведена в розрахунку, додатках, поясненнях (розкриттях), є достовірною.

Дата заповнення розрахунку (дд.мм.рррр)

2 1 . 0 4 . 2 0 0 6

Керівник або
підприємець

М.П.

(підпис)

Лебедь Александр Николаевич

(ініціали та прізвище)

Головний бухгалтер

(підпис)

Садовская Рита Григорьевна

(ініціали та прізвище)

Ця частина розрахунку заповнюється посадовими особами органу державної податкової служби

Відмітка про внесення даних до електронної бази податкової звітності "____"______20__р.

(посадова особа органу державної податкової служби)

3а

За результатами камеральної перевірки розрахунку (потрібно позначити)

порушень (помилко) не виявлено

Складено акт від "____"______20__р. № _____

"____"______20__р.

(посадова особа органу державної податкової служби (підпис, прізвище))

32442316

354126656

Annex 4. Tables of statistical reporting form N°1 - SHW «Report on SHW management»

Section 1. Collection and transportation of solid household waste (SHW)

Solid household waste and its components, which are collected separately	Line number	Collection volume		Transportation volume – total		Including to:										
						Waste collection centres		Waste recycling enterprises		Composting grounds		Incineration plants		Landfills (dumps)		
		m ³	tons	m ³	tons	m ³	tons	m ³	tons	m ³	tons	m ³	tons	m ³	tons	
A	B	1	2	3	4	5	6	7	8	9	10	11	12	13	14	
Mixed SHW	01															
Bulky SHW	02															
Waste paper (cardboard, paper)	03															
Polymers (film, bags, PET bottles and boxes, plasmas, etc)	04															
TetraPak and other packaging (combined, multilayered)	05															
Metals (ferrous, non-ferrous)	06															
Glass (glass package, broken glass)	07															
Textile (synthetic, natural, mixed)	08															
Organic components, which can biodegrade (food waste, green waste, etc)	09															
Electric and electronic equipment	10															
Hazardous components	11															
Other	12															
Total	13															

Sector 2. Recycling and/or disposal of SHW

Solid household waste and its components, which are recycled and/or disposed at the SHW treatment objects	Line number	Volume for recycling and/or disposal		Volume of waste after sorting and selected resource valuable components		Energy produced		Volume of non-recyclable remainder, total		Including the one transported to:			
		m ³	tons	m ³	tons	Electric, kWt	Thermal, kcal	m ³	tons	Incineration plant/facility	Landfill/dump for disposal	tons	
A	B	1	2	3	4	5	6	7	8	9	10	11	12
Mixed SHW	01												
Bulky SHW	02												
Waste paper (cardboard, paper)	03												
Polymers (film, bags, PET bottles and boxes, plasmas, etc)	04												
TetraPak and other packaging (combined, multilayered)	05												
Metals (ferrous, non-ferrous)	06												
Glass (glass package, broken glass)	07												
Textile (synthetic, natural, mixed)	08												
Organic components, which can biodegrade (food waste, green waste, etc)	09												
Electric and electronic equipment	10												
Hazardous components	11												
Green waste	12												
Other	13												
Total	14												

Section 3. Disposal of SHW on landfills (dumps)

Solid household waste and its components, which are disposed of at the waste treatment facilities	Line number	Volume of waste disposed of at the landfill (dump) total		Including			
				From the beginning of the landfill/dump operation		For the reporting period	
		m ³	tons	m ³	tons	m ³	tons
A	B	1	2	3	4	5	6
Mixed SHW	01						
Bulky SHW	02						
Non-recyclable remainder (not sorted, not composted, pyrolyzed, ashy and slugy, etc)	03						
Green waste	04						
Street litter	05						
Construction waste	06						
Industrial waste, 3 rd class of hazard	07						
Industrial waste, 4 th class of hazard	08						
Other	09						
Total	10						

Section 4. Monitoring of SHW treatment

Name of index	Line number	Unit of measurement	Quantity
A	B	C	1
General number of landfills and dumps, total Including: - overloaded; - the ones, which doesn't comply with environmental safety norms	01	Unit	
Closed landfills, which don't operate: - number - territory	02	Unit	
		Hectares	
General territory of landfills and dumps, total Including: - overloaded; - the ones, which doesn't comply with environmental safety norms	03	Hectares	
Need in new landfills - quantity - territory	04	Units	
		Hectares	
Amount of SHW collected and transported by enterprises, total. Out of them: - communal; - with communal ownership share - private	05	mln. m ³	
% of population coverage by SHW collection services	06	%	
Amount of SHW disposed of at landfills and dumps, total Out of them: - communal; - with communal ownership share; - private	07	mln. m ³	
Number of enterprises and their personnel operating in the sphere of SHW treatment, total. Out of them: - communal; - with communal ownership share - private	08	Unit/ person	
Number of waste collection trucks at enterprises, total. Out of them: - communal; - with communal ownership share - private	09	Unit	
Depreciation of specialized transport	10	%	

Passportization of landfills and dumps: - - need - passportized in the reporting period	11	Unit	
Total number of landfills and dumps, which should be reclaimed - need - reclaimed in the reporting period	12	Unit	
Total number of landfills and dumps, which are subject to sanitation - sanitation - over the reporting period	13	Unit	
Illegal waste dumps - number - territory - approximate SHW volume out of them liquidated over the reporting period - number - territory - approximate SHW volume	14	Unit	
		Hectare	
		Mln. m ³	
		Unit	
		Hectare	
		mln. m ³	

A	B	C	1
Money, aimed at the development of the SHW treatment sphere <ul style="list-style-type: none"> - construction of new landfills - reconstruction of landfills - renewal of the specialized transport fleet - renewal of the containers fleet - other expenses 	15	Thousand UAH	
Sources of financing, aimed at the development of the SHW treatment sphere: <ul style="list-style-type: none"> - state budget; - local budget; - loans; - other sources of financing 	16	Thousand UAH	
Subsidy from the budget: <ul style="list-style-type: none"> - according to enterprise calculation - within limits, approved by the budget - received in fact; 	17	Thousand UAH	
The sum of exemptions to the population according to the enterprise calculations: <ul style="list-style-type: none"> - out of them reimbursed - % of reimburse 	18	Thousand UAH %	
Bills payable, total Including: <ul style="list-style-type: none"> - from labour payment 	19	Thousand UAH	
Accounts payable , total Including: <ul style="list-style-type: none"> - population; - budget organization, out of them: <ul style="list-style-type: none"> • state budget • local budgets 	20	Thousand UAH	

Volume of services provision, total without VAT Including: - population; - sum of subsidies calculated - budget organisation, out of them: state budget local budget	21	Thousand UAH	
Volume of services paid, total without VAT	22	Thousand UAH	
Average approved tariff for SHW treatment (includes all costs for collection, transportation, recycling, disposal, utilization): - for population - for budget organizations - for other service consumers	23	UAH/ m ³	Total disposal

Annex 5. Form N°1 C - Housing utility “Report on operational costs and financial indicators of the enterprises dealing with maintenance of houses, constructions and near-housing territories”

26 люл. 2001 19:49 СТР1

OT :

ФАКС No. :

ЗВІТНІСТЬ

Подають:	Терміни подання
Суб'єкти підприємницької діяльності, які надають послуги з утримання будинків та прибудинкових територій, незалежно від форми власності та відомчого підпорядкування	до 25 числа після закінчення періоду; за рік - до 20 лютого
1) Ресжитлокомунгоспу АР Крим, обласним управлінням житлово-комунального господарства, Київській та Севастопольській міським держадміністраціям;	до 30 числа після закінчення періоду; за рік - до 25 лютого
Організації, визначені у п.1) надають зведену форму по відповідній території	
2) РІОЦ Держжитлокомунгоспу України	

Форма № 1С- житлове господарство

ЗАТВЕРДЖЕНО
 Наказ Держжитлокомунгоспу України
 16.12.2004 р. № 224
 за погодженням з Держкомстатом України

Квартальна
 Поштова

Найменування організації - складача інформації						
Управління містобудування, архітектури та житлово-комунального господарства Донецької ОДА						
Поштова адреса						
83000, м.Донецьк, вул.Університетська, буд.13						
Коди організації - складача						
За ЄДРПОУ	Території (КОЛГУУ)	Виду економічної діяльності (КВЕД)	Форми власності (КФВ)	організаційно-правової форми господарювання (КОПФГ)	Міністерства, іншого центрального органу, якому підпорядкована організація - складач інформації (КОДУ)*	
1	2	3	4	5	6	7

* Тільки для підприємств державного сектору

ЗВІТ

про витрати на виробництво та фінансові показники діяльності підприємств від надання послуг з утримання будинків, споруд і прибудинкових територій за січень - грудень 2005 року

Найменування показників	код рядка	одиниця виміру	Всього з початку року
A	Б	В	Г
Розділ I. Надання послуг			
Загальна площа приміщень, що утримуються, всього (2-3+4) :	1.	тис.кв.м.	48264,9
у тому числі за формами власності:			
державна та державна корпоративна	2.	" - "	-
комунальна та комунальна корпоративна	3.	" - "	15292,4
приватна	4.	" - "	32972,5

OT :

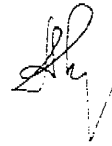
ФАКС No. :

26 ИЮН. 2001 19:50 СТР2

Чистий дохід від реалізації послуг, всього: (6-7-8-9-10)	5.	тис. грн.	259956,9
у тому числі:			226697,6
квартирна плата безпосередньо від населення	6.	" "	7261,3
орендна плата	7.	" "	5990,6
збори з орендарів	8.	" "	120,6
відшкодування витрат на обслуговування висхіднобудинкових мереж	9.	" "	19886,8
інші доходи	10.	" "	33568,1
Інші операційні доходи, всього:	11.	" "	5325,8
з них зокрема:			
субсидії	12.	" "	15388,5
відшкодування пільг	13.	" "	12853,8
дотація з бюджету на відшкодування різниці в ціні	14.	" "	1992,9
Фінансові та інші доходи звичайної діяльності	15.	" "	
Розділ II. Витрати на надання послуг			
Витрати звичайної діяльності	16.	тис. грн.	278739,9
у тому числі:			274470,4
Витрати операційної діяльності (17-24-25-28-29)	17.	" "	92838,2
у тому числі:			
Матеріальні витрати (19-20-21-22-23)	18.	" "	18869,0
з них: електроенергія	19.	" "	33289,6
поточний ремонт: матеріали та роботи, виконані підрядним підприємством	20.	" "	17296,3
вивезення побутових відходів	21.	" "	14805,5
обслуговування ліфта	22.	" "	8577,8
інші матеріальні витрати	23.	" "	92111,0
Витрати на оплату праці (25-26)	24.	" "	29202,7
з них: керівники, професійні працівники, технічні службовці	25.	" "	62908,3
робітники	26.	" "	30184,4
Відрахування на соціальні заходи	27.	" "	3189,1
Амортизація	28.	" "	56147,7
Інші витрати	29.	" "	16393,7
з них зокрема: податки	30.	" "	1388,6
визнані штрафи, пені, неустойки	31.	" "	1681,7
списана безнадійна заборгованість	32.	" "	4269,5
Фінансові та інші витрати звичайної діяльності	33.	" "	
Розділ III. Результати діяльності			
Фінансові результати від звичайної діяльності (34-35)			
прибуток (+)	34.	тис. грн.	21994,7
збиток (-)	35.	" "	5894,8
Дебіторська заборгованість за послуги на кінець звітного періоду за чистою реалізаційною вартістю (37-38)	36.	тис. грн.	142050,7
у тому числі:			
населення безпосередньо	37.	" "	118866,9
інші споживачі	38.	" "	243,5
Заборгованість бюджету з фінансування субсидій	39.	" "	1225
Заборгованість бюджету з відшкодування пільг	40.	" "	128,2
Заборгованість бюджету з дотації на відшкодування різниці в ціні	41.	" "	
Кредиторська заборгованість за товари, роботи, послуги на кінець звітного періоду	42.	тис. грн.	64751,1
у тому числі: за енергоносії	43.	" "	1016,2
Короткострокові кредити банків (за лишок на кінець періоду)	44.	" "	
Розділ V. Капітальний ремонт житлового фонду			
Обсяг робіт з капітального ремонту житлового фонду	45.	тис. грн.	48590,9

Обсяг фактично виконаних робіт з капітального ремонту	46.	" "	43741,6
Обсяг оплачених робіт з капітального ремонту	47.	" "	43334,5
Заборгованість з фінансування капітального ремонту	48.	" "	771,5
Довідково:			
Середньооблікова чисельність в еквіваленті повної зайнятості: керівники, професіонали, фахівці, технічні працівники	49.	осіб	4152
робітники	50.	" "	10669
Обсяг оплачених послуг без ПДВ, всього (52+53+54+55+56+57+58)	51.	тис. грн.	257645,3
у тому числі:			209075,3
квартирна плата від населення безпосередньо	52.	" "	
субсидії	53.	" "	5837,4
плати	54.	" "	15457,3
орендна плата	55.	" "	6573,9
збори з орендарів	56.	" "	5896,2
відшкодування витрат на обслуговування в будинкових мережах	57.	" "	111,9
інші доходи	58.	" "	14693,3

Начальник головного управління



О.О.Кривобородов

Веприцька Г.В., 338-01-06